

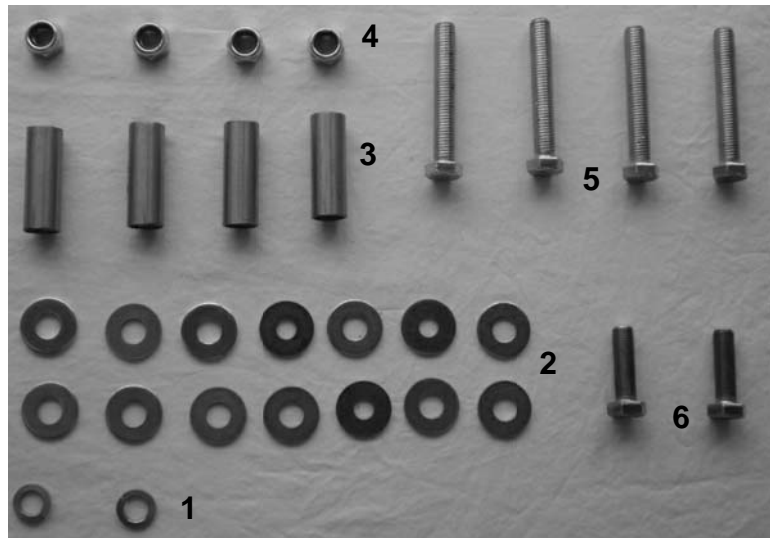


INSTALL TIME: 1.5 hours



Here is what you will receive
with winch plate...

1. 2 x M12 spring washer
2. 14 x M12 washers
3. 4 x spacers 55 mm long
4. 4 x M12 Nyloc nuts
5. 4 x M12 x 80 bolts
6. 2 x M12 x 40 bolts (Fine thread)



1 GET ORGANIZED

you will need:

- a 10, 12, 14, 18 and 19 wrench
- a small flat screw driver
- a star medium star screw driver

...CONT'D

IMPORTANT WARNING!

IT IS CRITICAL THAT ALL FRONT RUNNER RACKS AND ACCESSORIES BE PROPERLY AND SECURELY ATTACHED TO YOUR VEHICLE. IMPROPER ATTACHMENT COULD RESULT IN AN AUTOMOBILE ACCIDENT, AND COULD CAUSE SERIOUS BODILY INJURY OR DEATH TO YOU OR TO OTHERS. YOU ARE RESPONSIBLE FOR SECURING THE RACKS AND ACCESSORIES TO YOUR CAR, CHECKING THE ATTACHMENTS PRIOR TO USE, AND PERIODICALLY INSPECTING THE PRODUCTS FOR ADJUSTMENT, WEAR, AND DAMAGE. THEREFORE, YOU MUST READ AND UNDERSTAND ALL OF THE INSTRUCTIONS AND CAUTIONS SUPPLIED WITH YOUR FRONT RUNNER PRODUCT PRIOR TO INSTALLATION OR USE. IF YOU DO NOT UNDERSTAND ALL OF THE INSTRUCTIONS AND CAUTIONS, OR IF YOU HAVE NO MECHANICAL EXPERIENCE AND ARE NOT THOROUGHLY FAMILIAR WITH THE INSTALLATION PROCEDURES, YOU SHOULD HAVE THE PRODUCT INSTALLED BY A PROFESSIONAL INSTALLER SUCH AS A QUALIFIED GARAGE OR AUTO BODY SHOP.

1

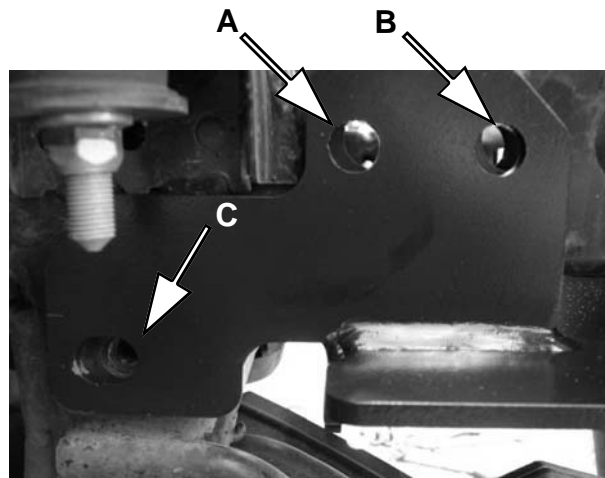
PREPARING YOUR VEHICLE

A)

Remove the front bumper of the vehicle. Ensure that all the clips are unclipped, and all the bolts removed.

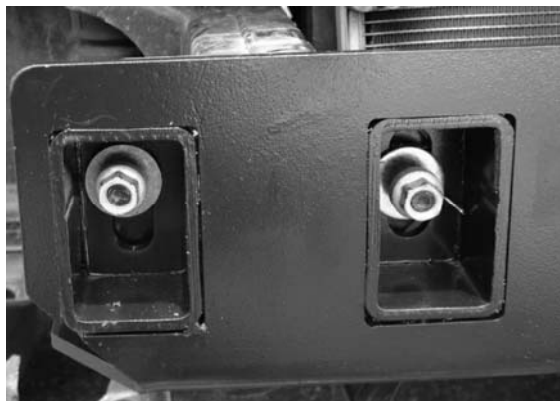
B)

Below (left) is an image illustrating where the spacers fit into the chassis. The same is applicable to the opposite side. Lift the winch plate into position so that the three mounting points on each side line up with the existing holes in the chassis. Insert holes A and B with the longer M12's (item 5). Make sure you use washers (item 2) either side of the spacers (item 3). Insert hole C with the Shorter M12's and use a spring washer (item 1) between the bolts head and the large washer.



C)

The studs in the front of the chassis will protrude through the rectangular tubing of the winch plate. Add a large washer to all four studs and fasten with the original flange nuts.



D)

Double check that all the bolts and nuts are fastened tightly. The front bumper needs to be cut using a hacksaw.

2

**CHECK OUT OUR WEBSITE OR DEALER
TO PURCHASE OTHER ACCESSORIES
FOR YOUR VEHICLE**

WWW.FRONTRUNNER.co.za

3

TAKE A TRIP

A)

After your first adventure, check the tension on all the bolts and screws and re-tighten where needed. You'll find a small amount of settling has happened.

Modifying your vehicle involves some risks and may void certain aspects of your vehicle's warranty.

© 2012 Front Runner Outfitters, Inc.