



**FRONT RUNNER**

**JEEP KK (CHEROKEE - LIBERTY)  
TRACKS - 1600MM**

**ENG**

TRJC002



**INSTALL TIME: 1 Hour**



### **IMPORTANT WARNING!**

**IT IS CRITICAL THAT ALL FRONT RUNNER PRODUCTS BE PROPERLY AND SECURELY ASSEMBLED AND ATTACHED TO YOUR VEHICLE. IMPROPER ATTACHMENT COULD RESULT IN AN AUTOMOBILE ACCIDENT, AND COULD CAUSE SERIOUS BODILY INJURY OR DEATH TO YOU OR TO OTHERS. YOU ARE RESPONSIBLE FOR ASSEMBLING AND SECURING ALL FRONT RUNNER PRODUCTS TO YOUR VEHICLE, CHECKING THE ATTACHMENTS PRIOR TO USE, AND PERIODICALLY INSPECTING THE PRODUCTS FOR ADJUSTMENT, WEAR, AND DAMAGE. THEREFORE, YOU MUST READ AND UNDERSTAND ALL OF THE INSTRUCTIONS AND CAUTIONS SUPPLIED WITH YOUR FRONT RUNNER PRODUCT PRIOR TO INSTALLATION OR USE. IF YOU DO NOT UNDERSTAND ALL OF THE INSTRUCTIONS AND CAUTIONS, OR IF YOU HAVE NO MECHANICAL EXPERIENCE AND ARE NOT THOROUGHLY FAMILIAR WITH THE INSTALLATION PROCEDURES, YOU SHOULD HAVE THE PRODUCT INSTALLED BY A PROFESSIONAL INSTALLER OR OTHER QUALIFIED PERSONNEL.**

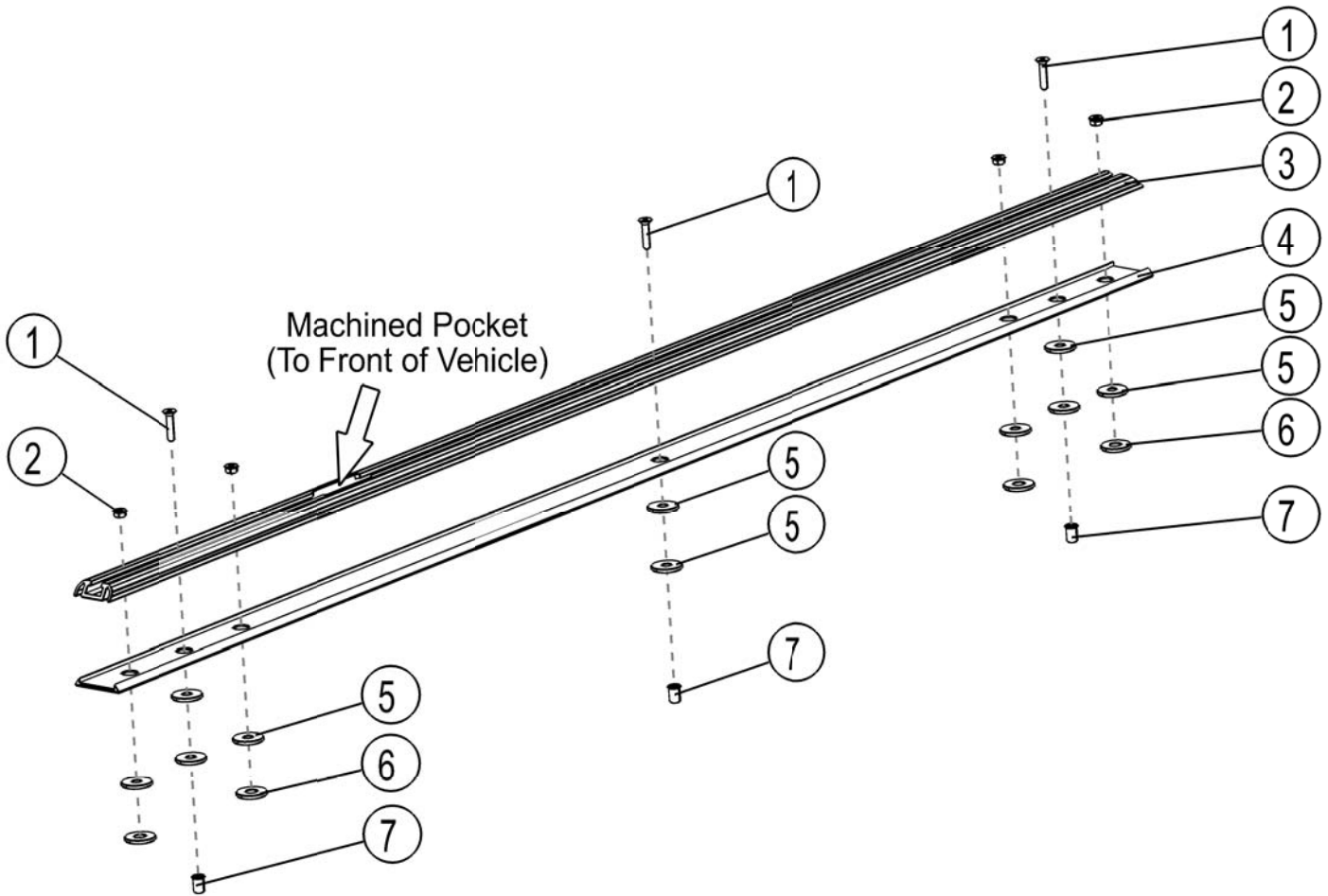
# 1 GET ORGANIZED...

Here is what you are looking at:

Item #	Quantity	Name
1	6	M6x30 COUNTERSUNK BOLT
2	8	FLANGE NUT
3	2	ALUMINIUM ROOF TRACK
4	2	RUBBER TRACK LINING
5	20	M10x30 FLAT WASHER
6	8	M12x30 FLAT WASHER
7	6	M6 RIVNUT

You will need:

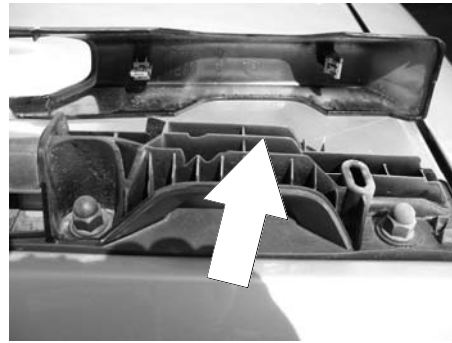
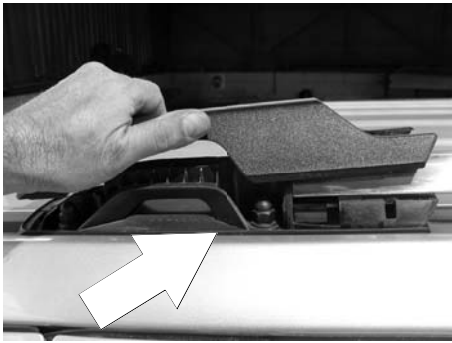
- a Jeep KK (Liberty)
- a Friend
- a 4 mm & 6 mm Allen key
- a Panel tool or flat screw driver
- a 10 & 15 mm Flat or Socket Wrench
- a tube of Silicone
- a Drill Machine
- a 4 mm & 9 mm Drill Bit
- a Rivnut Tool
- a Utility Knife



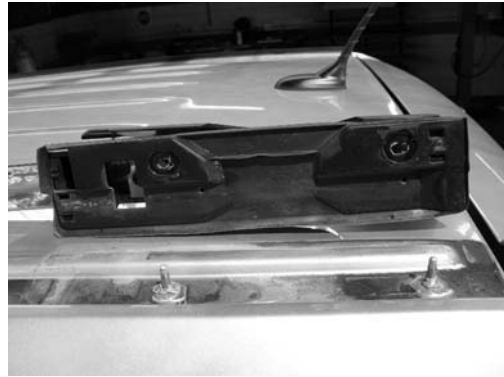
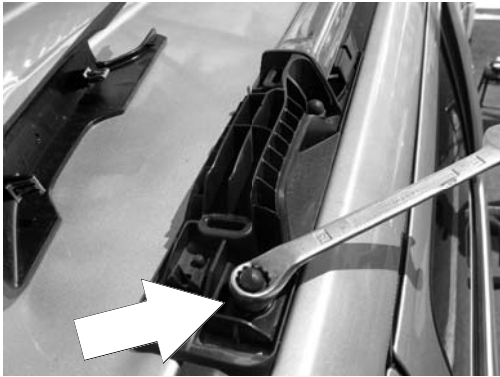
**(A)** Familiarize yourself with the parts and then step away from the work area and read through these instructions from beginning to end. Take a moment as little prep now may save you a lot of time later.

## 2 INSTALL TRACKS

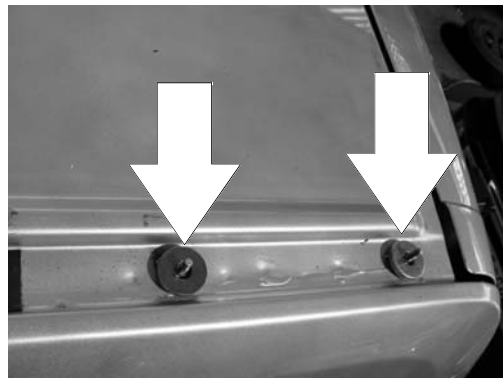
- (A) Using a panel tool or flat screwdriver, remove the plastic covers, front and rear.



- (B) Using a 15 mm wrench, loosen the nuts and remove the original roof rails.



- (C) Looking at the roof, you will see the four original mounting studs. Place a M12 x30 Flat Washer, followed by a M10 x30 Flat Washer (Items 5 &6) over each stud.



- (D) The Aluminum Tracks (Item 3) ship with the Rubber Seal (Item 4) loosely fitted in place. There are two quick steps to prep the Seal and Tracks. First, remove the paper to expose the glue. Then carefully center the holes in the Seal with the hole in the Track and press the seal into place. Now grab your scissors and trim the rubber at the end of each Track so it doesn't overhang. You can cut an angle with the slant of the Track, or make a straight cut. You might want to practice first.

## 2 INSTALL TRACKS CONT...

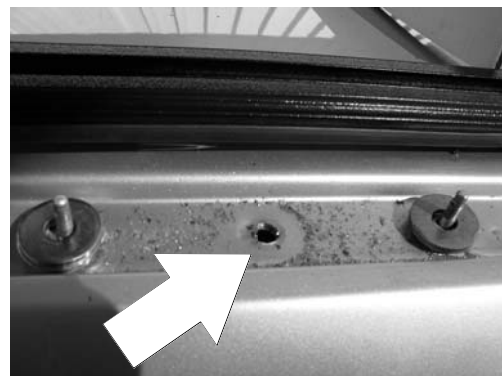
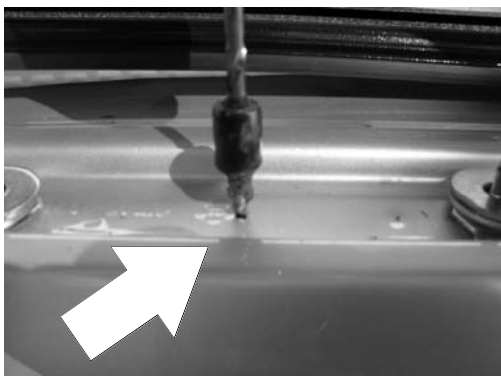
- ( E ) Place the Roof Tracks ( "machined pocket" to the front of the vehicle) over the studs. Using the Roof Track as a guide, mark the open holes in the Roof Track onto the vehicle's body using a marking pen.



- ( F ) Before drilling the holes in the roof, you need to do a bit of prep. Take both the 4 mm and 9 mm drill bits. Using a suitable tape, wrap a band of tape around the drill bit to act as a stopper to prevent you from drilling to deep as there are airbags located below where you will be drilling.

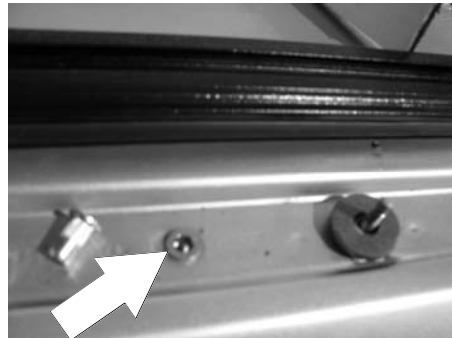
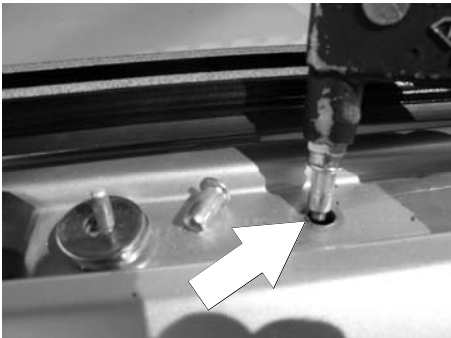


- ( G ) Drill a 4 mm pilot hole on each of your markings from Step 2E. Change to the 9 mm drill bit and re-drill the pilot holes to 9 mm. There is NO NEED for a lot of downward pressure. Let the drill do the work - your job is to keep the drill steady - you don't want it slipping across your roof and scratching it!

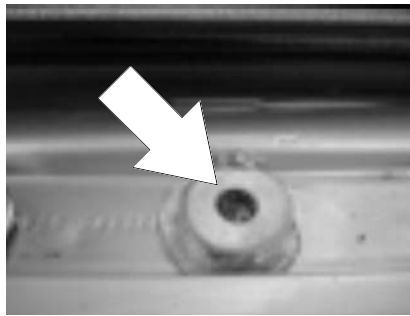


## 2 INSTALL TRACKS CONT...

- ( H ) Take your rivnut nut tool and insert and crimp a M6 rivnut (Item 7) into each of the 9 mm holes that you drilled.

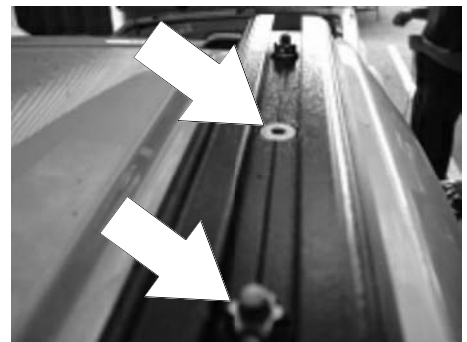


- ( I ) Seal around each rivnut with some silicone. Place two M10 x30 Flat Washers (Item5) on top of each rivnut.



- ( I ) Place the Roof Tracks back onto the vehicle and fasten using the M6 x30 Countersunk Bolts (Item 1) and a 4 mm Hex Key. Place some silicone on the thread of each Bolt before fastening. Start with the center hole followed by the front and rear.

Put a Flange Nut (Item 2) on each stud and tighten with 10 mm wrench.



**Congratulations, you have completed your installation. Take a step back and admire your work. Good Job!**