



**FRONT RUNNER**

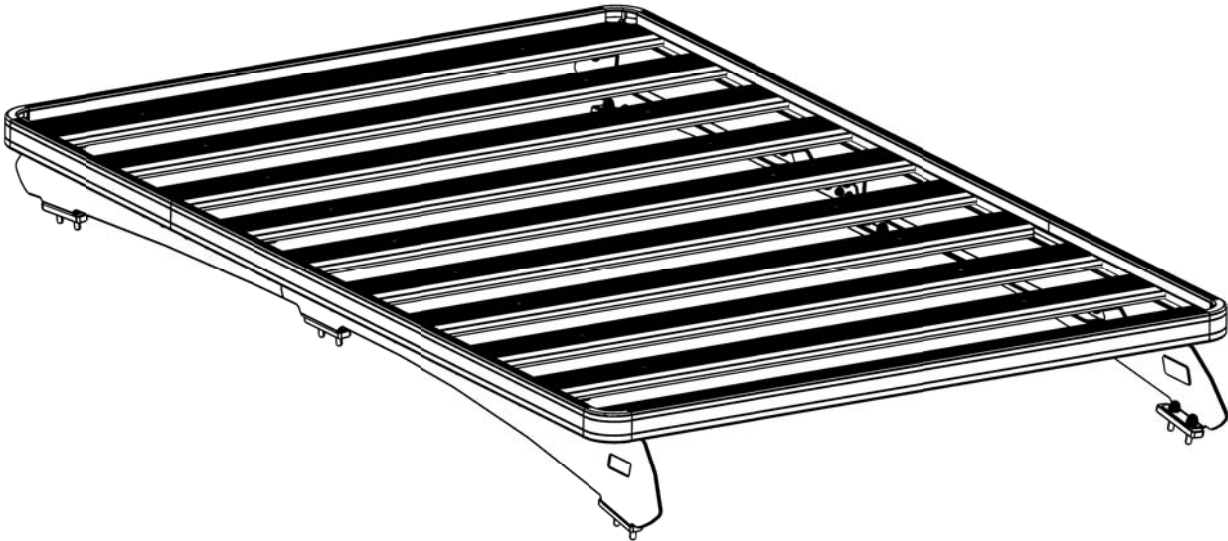
**TOYOTA FJ CRUISER  
SLIMLINE II RACK  
(1255MM X 1964MM)**

**ENG**

FATF004 / KRTF020T



**INSTALL TIME: 60 mins**



**READ ME FIRST:**

Thank you for purchasing a Front Runner Slimline II Rack.

This Roof Rack consists of a kit that contains:

- 1.) A Slimline II Tray
- 2.) A mounting system specific to your vehicle

This document will help you fit the Slimline II Tray to your specific vehicle.

**IMPORTANT WARNING!**

**IT IS CRITICAL THAT ALL FRONT RUNNER PRODUCTS BE PROPERLY AND SECURELY ASSEMBLED AND ATTACHED TO YOUR VEHICLE. IMPROPER ATTACHMENT COULD RESULT IN AN AUTOMOBILE ACCIDENT, AND COULD CAUSE SERIOUS BODILY INJURY OR DEATH TO YOU OR TO OTHERS. YOU ARE RESPONSIBLE FOR ASSEMBLING AND SECURING ALL FRONT RUNNER PRODUCTS TO YOUR VEHICLE, CHECKING THE ATTACHMENTS PRIOR TO USE, AND PERIODICALLY INSPECTING THE PRODUCTS FOR ADJUSTMENT, WEAR, AND DAMAGE. THEREFORE, YOU MUST READ AND UNDERSTAND ALL OF THE INSTRUCTIONS AND CAUTIONS SUPPLIED WITH YOUR FRONT RUNNER PRODUCT PRIOR TO INSTALLATION OR USE. IF YOU DO NOT UNDERSTAND ALL OF THE INSTRUCTIONS AND CAUTIONS, OR IF YOU HAVE NO MECHANICAL EXPERIENCE AND ARE NOT THOROUGHLY FAMILIAR WITH THE INSTALLATION PROCEDURES, YOU SHOULD HAVE THE PRODUCT INSTALLED BY A PROFESSIONAL INSTALLER OR OTHER QUALIFIED PERSONNEL.**

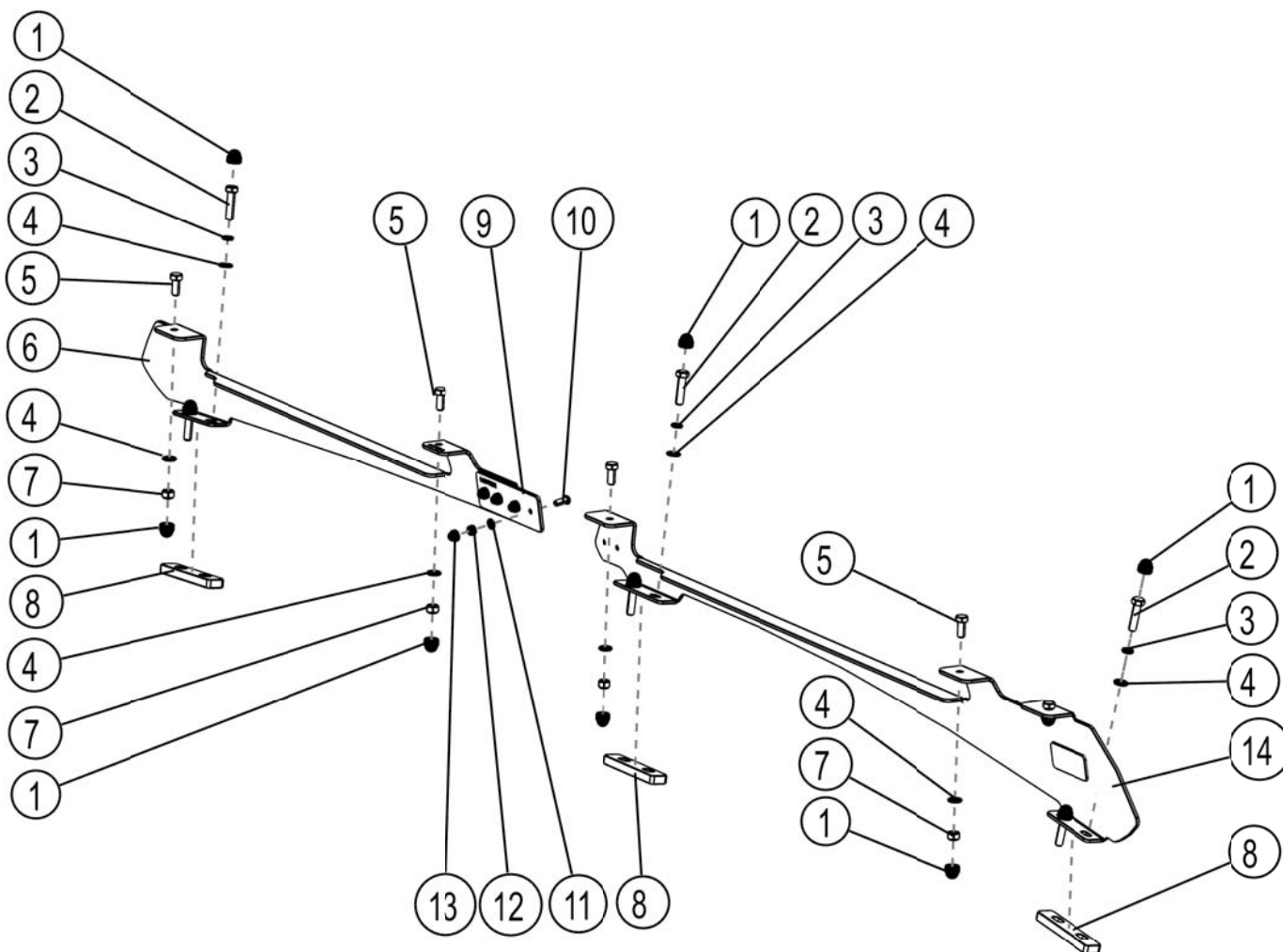
# 1 GET ORGANIZED...

Here is what you are looking at: Please note that only the right hand side's components have been shown.

Item #	Quantity	Description
1	22	M8 NUT CAP
2	12	M8 x 35 HEX BOLT
3	12	M8 SPRING WASHER
4	22	M8 FLAT WASHER
5	10	M8 x 20 HEX BOLT
6	2	FRONT FOOTRAIL - 1 LEFT, 1 RIGHT
7	12	M8 NYLOC NUT
8	6	SPACER
9	2	JOINER PLATE
10	8	M6 x 16 BUTTON HEAD BOLT
11	8	M6 FLAT WASHER
12	8	M6 NYLOC NUT
13	8	M6 NUT CAP
14	2	REAR FOOTRAIL - 1 LEFT, 1 RIGHT

### You will need:

- 13 mm Flat or Socket Wrench
- 10 mm Flat or Socket Wrench
- 4 mm Hex Key
- Measuring Tape
- Rag and some Methylated Spirits / Denatured Alcohol
- Tube of Silicone

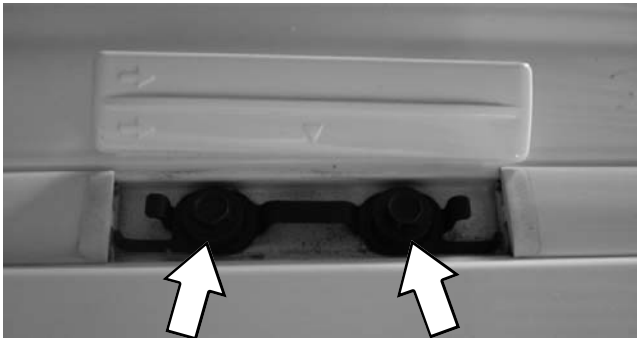


**(A)** Familiarize yourself with the parts and then step away from the work area and read through these instructions from beginning to end. Take a moment as a little prep now may save you a lot of time later.

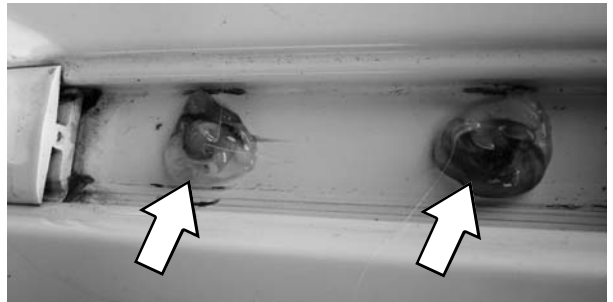
## 2 FIT THE FOOT RAILS

- (A) Unclip and remove the six covers on the top of the vehicle's roof (Three on each side of the vehicle - middle, front and rear) to expose the vehicle's mounting points.

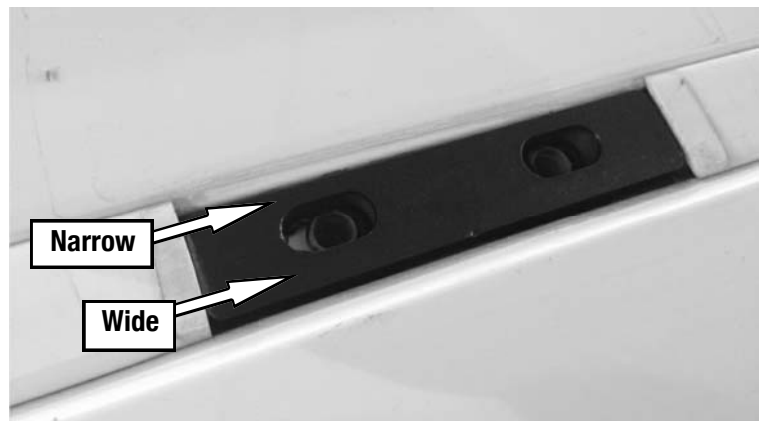
Remove the 8mm Bolts as indicated by the arrows using a 10mm Socket Wrench.



- (B) Clean the area around the bolt holes using a rag and methylated spirits/denatured alcohol. Place some Silicone over each bolt hole.



- (C) Place a Spacer (Items 8) into each of the Mounting Point Recess, lining up the holes in the Spacers with the bolt holes in the roof. Ensure that the wide section of the Spacers (as indicated in the image) go towards the outside of the vehicle.



- (D) Join the Front and Rear Foot Rails (Items 6 & 14) together using the M6 x 16 Button Head Bolts, M6 Flat Washers, M6 Nyloc Nuts and Joiner Plates (Items 9, 10, 11, 12). Place a M6 Nut Cap (Item 13) over each of the Nyloc Nuts.



## 2 FIT THE FOOT RAILS CONT...

- ( E ) Place the assembled Foot Rails onto the vehicle lining up the mounting holes in the Foot Rails with the mounting holes in the roof. The product sticker goes to the rear and outside of the vehicle. Starting from the front, loosely fasten the Foot Rail to the vehicle using the M8 x 35 Hex Bolts, M8 Flat Washers and M8 Spring Washers (Items 2, 3, 4) supplied. Tighten all bolts securing the Foot Rail to the vehicle and place a M8 Nut Cap (Item 1) over each Bolt.

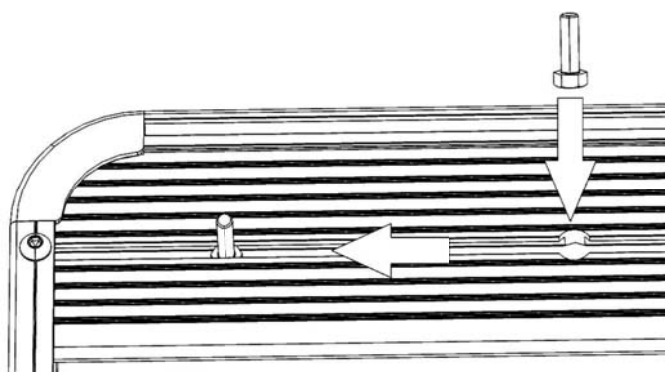


## 3 FIT THE RACK



**Note:** If your Slimline II Tray is not already assembled, assemble it as per the Slimline II Tray Universal Assembly Instruction (Document RRSUNI). Read Step 3A before fitting the Wind Deflector

- ( A ) Before fitting the Wind Deflector, and with the Rack in the upside down position, (Check with product sticker. It should be upside down), slide a M8x20 Hex Bolt into each end of the First Slat using the machined slot as shown.



### 3 FIT THE RACK CONT...

- ( B ) With your rack still upside down from Step 3A, slide a M8 x 20 Hex Bolt into each end of Slats 4, 5, 9, 10 (Slat 1 is the Slat with the Wind Deflector attached to it).

Grab your Friend and with one of you on each side of the Rack, flip the Rack end over end (Prevents the Hex Bolts from falling out the machines slots) so that the M8 x 20 Hex Bolts are facing down. Approach the vehicle from the rear, with the Wind Deflector facing forward. Lift the Rack up and over the Roof positioning it above the Foot Rail. Bring the Rack down slowly, lining up the Bolts in the Rack with the holes in the top of the Foot Rail. Hand tighten the Rack to the Foot Rail using the M8 Washers and M8 Nyloc Nuts (Items 4 & 7) supplied.

Center the rack - left to right (check using a tape measure). Fasten all the Nuts securing the Rack to the Foot Rail. Cover the M8 Nyloc Nuts with the M8 Nut Caps supplied

Congratulations, you have completed your installation. Take a step back and admire your work. Good Job!



### 4 TAKE A TRIP

- ( A ) After your first adventure, check that all nuts, bolts, screws and fittings are tight. Re-tighten where needed. You'll find a small amount of settling has happened.

Go on many more adventures, periodically checking all nuts, bolts, screws and fittings.



Front Runner can not recommend a maximum load carrying capacity. Please refer to your vehicle manufacturer's recommendations.